

WWoT WSPR

Transmitter

README

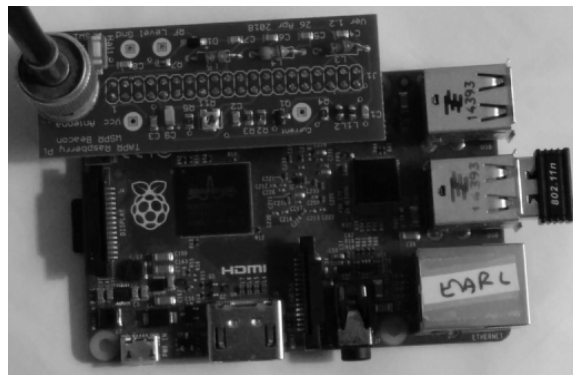
Thank you for purchasing the TAPR WSPR Transmitter. Below are the steps to get it up and running. This page is intended as a starting point. The remainder of the instructions can be downloaded from the TAPR website -

<https://tapr.org/product/wspr/>

The download links are located at the bottom of the page.

In addition to the WSPR kit, you'll also need the following to have a complete WSPR transmitter -

1. **Raspberry Pi 2, 3 or 4 (Pi)**. We recommend getting a Pi 3 or 4. They have built in WiFi and faster processor (the Pi 2 does not...) Sources include Amazon, Adafruit, and others. (<https://www.adafruit.com/?q=raspberry+pi&sort=BestMatch>). We have no connection with any RPi vendor..
2. **2.5 amp+ power supply w/micro USB connector or USB-C connector, as appropriate for your RPi version**.. This plugs into the USB connector of the Pi. Adafruit is one source (<https://www.adafruit.com/product/1995>). A word of caution: don't cheap out on the power supply. A weak power supply will cause intermittent problems that are *very* hard to diagnose. Make sure the power supply will deliver at least 2 amps, and preferably more. This is cheap insurance.
3. **Ethernet cable**. You need to connect the Pi to your network over Ethernet (wired connection) for initial setup. You can switch to WiFi after that.
4. **WiFi USB dongle**. You only need this if you're using an Pi 2 and you want to use WiFi. Here is a WiFi dongle example: <https://www.adafruit.com/product/2810>.
5. Contact us at contact@tapr.org for help or troubleshooting.



Happy WSPRring!
73, TAPR